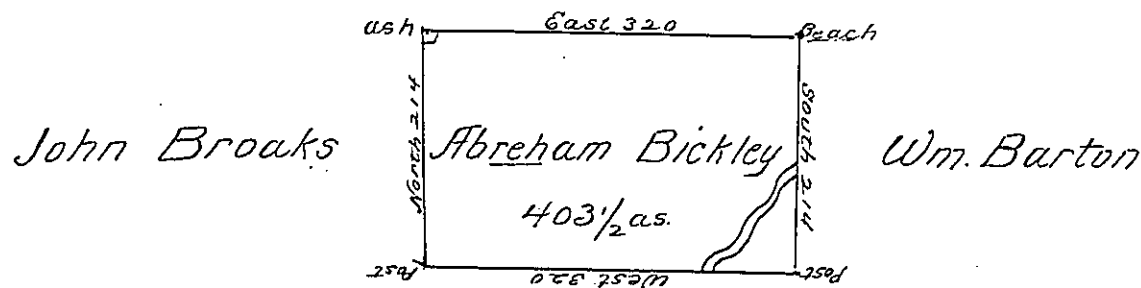


Charles Biddle



George Bickham

Situate on the waters of Lake Erie
in Allegany County Surveyd the 16th Sept.
1795 to Abraham Bickley on his warrent da-
ted the 30th May 1792 containing Four hun-
dred three & a half acres & allowance.

Thos. Rees L.S.

Daniel Brodhead Esquire }
Surveyor General }

IN TESTIMONY that the above is a copy of the original remaining on file in
the Department of Internal Affairs of Pennsylvania, made
conformably to an Act of Assembly approved the 16th day of
February, 1833, I have hereunto set my Hand and caused
the Seal of said Department to be affixed at Harrisburg,
this fourth day of June 1901

James W. Latta
Secretary of Internal Affairs.